

**PDDQ**  
Pretty Damn Quick

**POLY**



**PDDQ**  
Pretty Damn Quick

**POLY**

PREMIUM NEXT *LEVEL*  
WATERPROOFING SOLUTIONS  
WEATHERING THE STORM



Ph: 03 9758 0555  
Mobile: 0499 979 885  
Factory 17 / 69 Acacia Road, Ferntree Gully VIC 3156

[sales@pdqpoly.com.au](mailto:sales@pdqpoly.com.au)

ABN 73 157 813 808

[www.pdqpoly.com.au](http://www.pdqpoly.com.au)



**WATERPROOFING**

**CRACK ISOLATION**

**TILE UNDERLAY**





Tough, strong, self-adhesive, PDQ Poly provides superior waterproofing and Crack isolation for ceramic tile or natural Stone.

Created with innovative technology, PDQ Poly is made from a premium Reinforced PVC, coated with proprietary acrylic Immerse-Guard coating. Suitable for use in with many waterproofing applications.

Easy to apply, PDQ Poly moulds to your surface sealing it completely From water and mineral salt transmission even in the most Extreme conditions. Available in rolls 12m long x 1.3m wide. With durable joint backing tapes, handling and application is Quick and easy. With no drying time, you can tile immediately After laying PDQ Poly over new flooring systems or to prepared Older or cracked existing surfaces.

PDQ Poly allows for removal of tiles years later without Causing damage to the substrate.

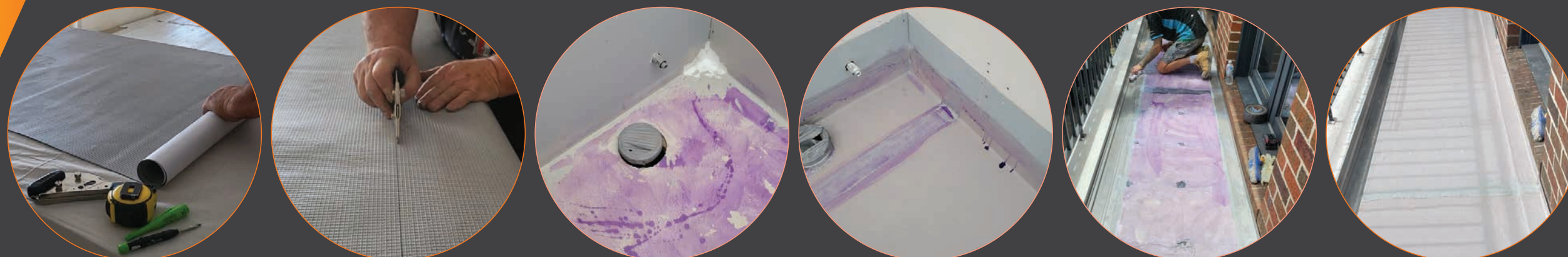
### Features:

- Wet area waterproofing and moisture barrier
- High tensile strength
- Indoor and outdoor applications
- Self-adheres to most substrates
- Vibration, crack and movement resistant
- Can be applied over new or existing substrates
- Suitable for use below underfloor heating systems
- Lifetime live adhesion performance
- Uncoupling capabilities for future renovations
- Heat resistant up to 85°C
- Salt transmission barrier for underlayment screeds
- AS/NZS 4858:2004 compliant (Wet area membranes).
- Highly suited to AS 3740:2021 installations (Waterproofing of domestic wet areas).
- AS 4654.1-2012 compliant (Waterproofing membranes for external above-ground use; materials).
- Highly suited to AS 4654.2-2012 installations (Waterproofing membranes for external above-ground use; installation).

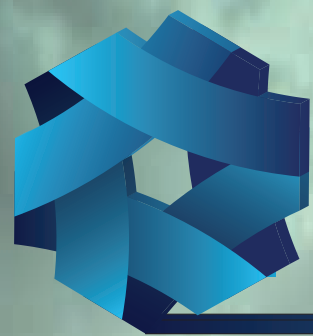
### Substrates:

- Tongue and Groove flooring, Plyboard or Particleboard
- Trowelled Concrete
- Self Levelling products, Sand and Cement screeds
- Existing Floor Tiles
- Structural Fibre Cement and Magnesium Oxide Board
- Non-structural Fibre Cement sheet
- Existing Terrazzo flooring
- Vinyl Flooring
- Compressed sheet flooring
- Mild Steel
- Stainless Steel
- PVC Precast panels
- Old Marble and Stone
- Old Concrete

## PREMIUM NEXT LEVEL WATERPROOF MEMBRANE

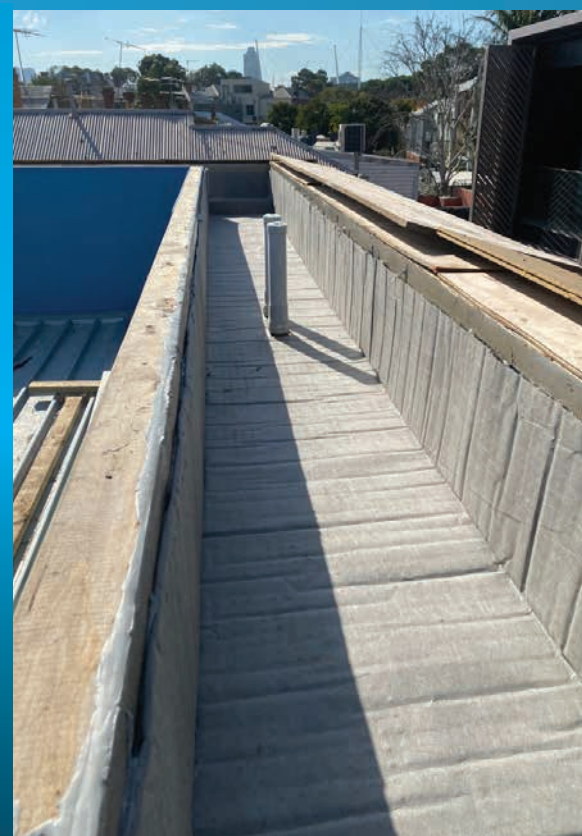






**PDQ**  
Pretty Damn Quick

**POLY**

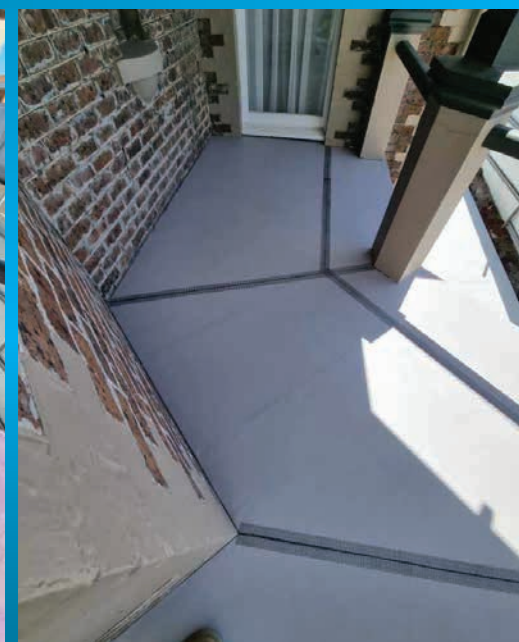






**PDQ**  
Pretty Damn Quick

**POLY**







## BASIC INSTALLATION GUIDE

Cleaning, Priming & Installation

### STEP 1: CLEAN

Remove foreign matter from substrate by scraping, brooming and Vacuuming followed by washing if necessary with a spin-mop and Water only (frequently change water). Avoid excessive water on Wood-based substrates (sand then vacuum preferred).

If detergent or degreaser is necessary, for example on concrete, Use an alkaline cleaner (subsequently well rinsed off) or an Appropriate solvent (Worksafe compliant ventilation/PPE) ensuring Solvent is mostly evaporated before proceeding to the next step. Check fasteners are flush or below surface.

### STEP 2: BOND-BREAKER FILLET

Caulk wall/floor junctions with SMX50 to form a bond-breaking transition:

- Internal installation AS 3740: 12mm hypotenuse; equates to 8.5 x 8.5mm Mitre fillet or 7.7 x 7.7mm concave fillet.
- External installation AS 4654.2: a mitre or concave fillet of any dimension. (PDQ POLY recommends a minimum 12mm hypotenuse fillet)

### STEP 3: PRIME

**Do not prime non-absorbent surfaces such as Metals, old ceramic, tiles and some power-float concrete.**

PDQ Purple Primer is recommended

For preparing porous/absorbent substrates including old concrete, Cement sheet underlay, Villaboard™, Duraflor™ or similar. Apply two Coats of primer (preferably one after the other). Dilute first coat 50:50 (50%) with clean water (in a separate container) and apply Using a roller or sponge. Apply second coat (dilute up to 10%) using A roller or pressure-pack sprayer. Lay PDQ Poly as soon as possible on Wet or damp primer.

Note 1: YELLOWtongue™ Secura™ Magnum Board® or similar may Not require priming (consult PDQ).

Note 2: Test small area before commencing.

Note 3: Always prime immediately before laying (re-prime if delay Results in primer becoming touch-dry)

Note 4: Priming will reduce the ability to immediately reposition PDQ Poly or remove it in years to come.

Trade marks or registered trade marks are the property of their respective owners.

### STEP 4: BOND-BREAKER TAPE

PDQ Bondbreaker Tape is recommended for preparing tongue & groove structural flooring including YELLOWtongue™ Secura™ Duraflor™ Constructafloor® Magnum Board®. All joints, including butt joints, Should be taped to ameliorate the effects of differential joint movement common with such flooring.

### STEP 5: SETOUT

PDQ Poly should be laid at right angles to the long edges of existing flooring.

Check squareness of room and commence chalk-line setout from a datum that suits the perimeter finish (Typically PDQ Poly is turned-up walls 100mm). PDQ Poly is 1300mm wide; therefore, set chalk lines At 1305mm centres to allow a 5 mm gap between sheets.

### STEP 6: BASE JOINT TAPE

Rollout PDQ Base Joint Tape at each chalk-line. Cut to length (including any additional required For wall turn-up). Remove backing and stick down centrally over chalk-line.

Note PDQ Base Joint Tape is required for PDQ's duplex-joint; however, it isn't required for PDQ's overlap-joint which is permissible in many installation (consult PDQ).

### STEP 7: PRE-CUT

Rollout PDQ Poly face-up (leave backing attached). Cut to length (including wall turn-up) And number each piece and the corresponding substrate then rollup each (Except the first sheet).

### STEP 8: LAY

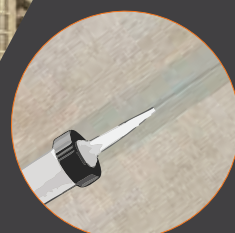
Align first sheet 2.5mm from chalk-line full length then tape in place to avoid any Movement from chalk-line during next step. Next roll back one end and peel 200mm of backing and cut away exposing 200mm of adhesive. Carefully lay The 200mm of exposed adhesive maintaining straightness. Next rollup sheet Completely and peel the backing from underneath commencing at the 200mm point. Continue to peel and unroll while pressing onto the substrate. Take care to remove air bubbles using a heavy roller or wide squeegee. If excessive air bubbles appear then lift, squeegee out re-lay. Ensure a 5mm gap is maintained between subsequent sheets.

### STEP 9: TOP MESH TAPE

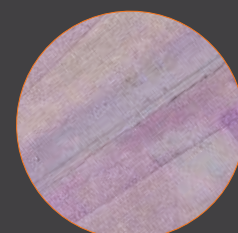
Apply PDQ Top Mesh Tape centrally to sheet joints, full length Including any wall turn-up. Note PDQ Top Mesh Tape is Self-adhesive and will stay in place pending application of SMX50.

### STEP 10: SEAL

Apply SMX50 to PDQ Top Mesh Tape using multiple beads Across the 75mm mesh width. Tool into mesh and trowel out To approximately 90mm.



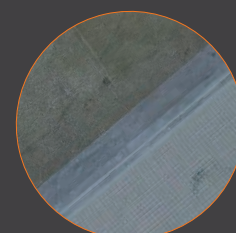
Caulk Joints



Purple Primer



Bond Breaker Tape



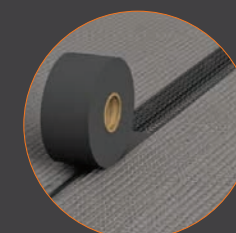
Base Joint Tape



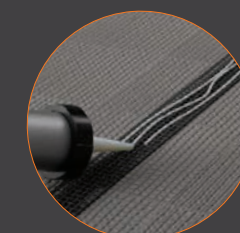
PDQ Poly Sheet



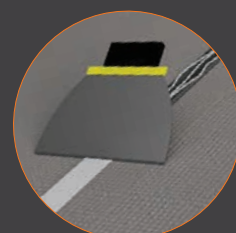
Sheet Application



Top Mesh Tape



SMX-50 Polymer



Trowel





**PDQ**  
Pretty Damn Quick

**POLY**

## ADVANTAGES

PDQ Poly works hand-in-hand with Soudal SMX50 Seal & Stick.

Regular testing in PDQ's Melbourne laboratory and Soudal's Sydney laboratory ensure high standards for lasting peace of mind. SMX50 was originally tested by PDQ for 85-days on PDQ Poly immersed in water in a climate chamber cycling from -5°C to 55°C. During testing, SMX50 did not degrade whereas all other brands tested in the same conditions failed well prior to 85-days. SMX50 is based on Kaneka (Japan) silyl-terminated polyether, recognised as superior to all other resins.

1. Easily heated and moulded into puddle flanges, providing a seamless sealed finished with SMX50
2. Easily rolled up walls (typically 100 mm) removing the need for wall/floor junction tape. Termination up walls is quick with mesh tape and SMX50.
3. Prefabricated elastomeric internal & external corners ensure exceptional corner sealing finished with SMX50.
4. PDQ Purple primer is available for maximum adhesion to absorbent substrates.
5. PVC collar rings can be used to seal around toilet pipe penetrations.
6. An average bathroom floor can be laid in two sheets with one join.
7. No need for wet membrane thickness testing (comb test). Sheet provides a consistent thickness to the entire floor.
8. Resistant to soap, detergent, shampoo and alkaline cleaners such as bleach and washing soda. PDQ Poly's PVC sheet will not degrade by chemical attack in contrast to liquid membranes that will degrade from exposure to chemicals over many years.
9. Healthy alternative to cement sheet underlay for general tiling in non-wet-areas. Quick and safe to cut with no silicosis risk.
10. Ideal crack isolation membrane for fractured or damaged concrete floors.
11. Exceptional below ground waterproofing performance when combined with a cusped drainage sheet such as Pro Drain.
12. The ultimate solution for planter boxes comes with our proprietary Copper Root Guard coating. Some design may require it be combined with a cusped drainage sheet.
13. Balconies set up with graded substrates are seamlessly and continuously waterproofed from wall into lineal drains. PDQ Poly offers a completely homogeneous waterproofing membrane for linear drained balconies.
14. Ideal for use under pod or pedestal systems and clip-deck frame on pod systems.
15. Manufactured based on a self-extinguishing PVC sheet.
16. 30 MPa tensile strength provides the ultimate crack isolation. Currently the strongest sheet membrane available (a standard 12m roll will resist an extensible force of 30 tonne).
17. Tile immediately if required (prior to SMX50 skinning) by using our clear top cover tape.
18. Rooftop solutions for low pitch and flat roofs. Custom colours, Colorbond colours and solar reflective off-whites for cool-roof solutions.
19. No substrate limitations such as concrete block walls, wood floated screeds and concrete. They're easily prepared by applying a primer coat of low-viscosity SMX30.

## PREMIUM NEXT *LEVEL* WATERPROOF MEMBRANE

